

The background of the page features a detailed, semi-transparent image of industrial machinery, specifically a large valve assembly with various pipes and components. The image is rendered in a light, ethereal style, allowing the text to be clearly visible. On the right side, the company name 'Universal Valves' is written vertically in a large, green, sans-serif font, with the 'U' at the bottom being significantly larger than the other letters.

INDUSTRIAL VALVES PIPING PACKAGES VARIOUS EQUIPMENT

UNIVERSAL S.R.L.

HEAD OFFICE – FACTORY:

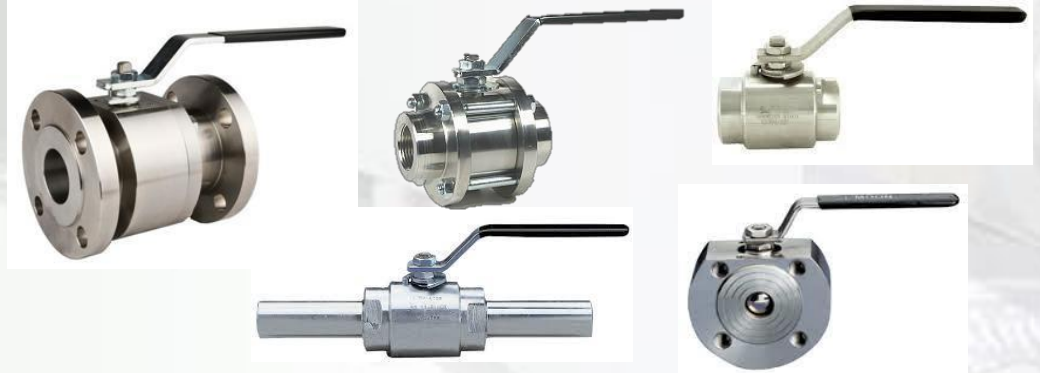
29010 TREVOSZO DI NIBBIANO V.T.(PC) ITALY- VIA MOLINO FRANZINI 13

TEL.+39/0523997677 – TELEFAX +39/0523997354 VAT: IT 01072360330

E-MAIL export@universalvalves.it - www.universalvalves.it

BALL VALVES

FLOATING
MONOBLOC - WAFER
SPLIT BODY - 2 PIECES



TRUNNION
3 PIECES BODY
SIDE & TOP ENTRY



CONSTRUCTION

B 16.34 – API 6A - API 6D – BS 5351 – EN 17292

SIZE

FROM 1/2" TO 60" REDUCED AND FULL BORE

CLASS

ANSI 150 - 300 - 600 – 800 - 900 – 1500 – 2500 – 4500
PSI 3000 – 6000 - 10000

END CONNECTIONS

THREADED – BW – SW - PE
FLANGED ACCORDING TO ANSI - API – DIN - BS

SPECIAL FEATURES

NACE MR 01.75 – FIRE SAFE
METAL TO METAL SEAT – UNDERGROUND SERVICE
GEAR – ELECTRIC AND PNEUMATIC ACTUATOR EXTENDED BONNET -
CRYOGENIC SERVICE
HEATING JACKET – PREVELDED NIPPLES

STANDARD MATERIALS

C.S. A105 / A216 WCB – L.T. C.S. A 350 LF2 – A352 LCB
S. S. A182 F304/L – A182 F316/L - A351 CF8M/CF3M

SPECIAL MATERIALS

HASTELLOY – INCONEL – INCOLOY – MONEL
TITANIUM – DUPLEX – SUPER DUPLEX
BRASS - BRONZE

FORGED VALVES

GATE

GLOBE

CHECK



NEEDLE



TYPE	BOLTED AND WELDED BONNET RENEWABLE AND INTEGRAL SEAT
CONSTRUCTION	B 16.34 -API 602 - BS 5352 - EN 15761
SIZE	FROM 1/4" TO 2" REDUCED AND FULL BORE
CLASS	ANSI 150 - 300 - 600 - 800 - 900 - 1500 - 2500 - 4500 PSI 3000 - 6000 - 10000
END CONNECTIONS	THREADED - BW - SW - PE FLANGED ACCORDING TO ANSI - API - DIN - BS
SPECIAL FEATURES	NACE MR 01.75 Y PATTERN - THROUGH CONDUIT PRESSURE SEAL BONNET - BELLOWS SEAL GEAR - ELECTRIC AND PNEUMATIC ACTUATOR EXTENDED BODY - EXTENDED BONNET ANGLE GLOBE VALVE - CRYOGENIC SERVICE
STANDARD MATERIALS	C.S. A 105 - L.T. C.S. A 350 LF2 S. S. A 182 F304/L - A 182 F316/L
SPECIAL MATERIALS	C.S. A 182 F5 - F 9 - F 11 - F 22 S.S. A 182 F 321 - A 182 F 347 HASTELLOY - INCONEL - INCOLOY - MONEL ALLOY 20 - TITANIUM - DUPLEX - SUPER DUPLEX

CAST VALVES

GATE

GLOBE

CHECK



TYPE

**BOLTED BONNET
RENEWABLE AND INTEGRAL SEAT**

CONSTRUCTION

B 16.34 – API 600 – EN 10434 – BS 1873 – BS 1868 – API 6D

SIZE

**GATE FROM 2" TO 48"
GLOBE FROM 2" TO 16"
CHECK FROM 2" TO 36"**

CLASS

ANSI 150 - 300 - 600 – 900 – 1500 – 2500

END CONNECTIONS

**BW AND
FLANGED ACCORDING TO ANSI - API – DIN - BS**

SPECIAL FEATURES

**NACE MR 01.75
Y PATTERN – THROUGH CONDUIT
PRESSURE SEAL BONNET – BELLOW SEAL
GEAR – ELECTRIC AND PNEUMATIC ACTUATOR
CHAIN WHEEL OP. - EXTENDED BONNET
ANGLE GLOBE VALVE - CRYOGENIC SERVICE**

STANDARD MATERIALS

**C.S. A 216 WCB – A 352 LCB
S. S. A 351 CF8 – A 351 CF8M**

**SPECIAL
MATERIALS**

**C.S. A 217 WC6 – WC9 – C 5 – C 12
S.S. A 351 CF8C
HASTELLOY – INCONEL – INCOLOY – MONEL
ALLOY 20 - TITANIUM – DUPLEX – SUPER DUPLEX**

PLUG VALVES

**LUBRICATED
STANDARD AND
PRESSURE
BALANCED**



**NON
LUBRICATED
WITH SLEEVE 2/5
WAYS**



CONSTRUCTION	B 16.34 – API 6A - API 6D – API 599 - BS 5353
SIZE	1/2" TO 24"
CLASS	ANSI 150 - 300 - 600 – 800 - 900 – 1500 – 2500 PSI 2000 - 3000 – 6000 - 10000
END CONNECTIONS	THREADED – BW – SW FLANGED ACCORDING TO API – ANSI – DIN -BS
SPECIAL FEATURES	NACE MR 01.75 SHORT, REGULAR AND VENTURI PATTERN OPERATING EXTENSION - BEVEL GEAR ELECTRIC AND PNEUMATIC ACTUATOR HEATING JACKET - CRYOGENIC SERVICE PFA/PTFE LINING
STANDARD MATERIALS	C.S. A105 - A216 WCB – A352 LCB S. S. A182 F304 – A182 F316 – A351 CF8 – A351 CF8M CAST AND DUCTILE IRON
SPECIAL MATERIALS	HASTELLOY – INCONEL – MONEL – TITANIUM – DUPLEX ALLOY 20 - NIKEL

BUTTERFLY VALVES

WAFER
LUG
FLANGED



CONSTRUCTION

**ISO 5752 – EN 558 (DIN 3202 T3 K1)
API 609 - MSS SP-67 – BS 5155**

SIZE

1-1/2" TO 96"

CLASS

PN 10 – PN 16 - ANSI 150 – 300 – 600

SPECIAL FEATURES

**CONCENTRIC – DOUBLE ECCENTRIC – TRIPLE ECCENTRIC
NACE MR 01.75 - OPERATING EXTENSION
BEVEL GEAR – ELETRIC AND PNEUMATIC ACTUATOR
PFA/PTFE LINING**

STANDARD MATERIALS

**CAST AND DUCTILE IRON
C. S. A105 - A216 WCB
S. S. 316 - A351 CF8M
ALUMINIUM BRONZE**

SEATS

**BUNA NBR – EPDM - VITON – SILICONE
NEOPRENE – PTFE - HYPALON – METAL TO METAL**

**SPECIAL
MATERIALS**

**HASTELLOY – INCONEL – MONEL – TITANIUM – DUPLEX ALLOY 20 -
NIKEL**

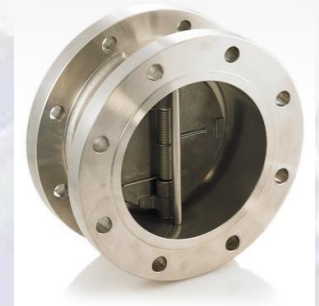
NON RETURN VALVES

SINGLE PLATE CHECK VALVE

DISC CHECK VALVE



DUAL PLATE CHECK VALVE WAFER LUG FLANGED



CONSTRUCTION

B 16.5 - API 594 - EN ISO 8062-3 - BS EN 10204

SIZE

2" TO 60"

CLASS

ANSI 150 – 300 – 600 – 900 -1500 – 2500

SPECIAL FEATURES

AVAILABLE ON REQUEST

STANDARD MATERIALS

CAST AND DUCTILE IRON
 C. S. A105 - A216 WCB
 L.T.C.S. A350 LF2 – A352 LCB
 S. S. 316 - A351 CF8M
 ALUMINIUM BRONZE

SEATS

METAL TO METAL / LINED

SPECIAL MATERIALS

HASTELLOY – INCONEL – MONEL – TITANIUM – DUPLEX ALLOY 20 -
 NIKEL

OTHERS VALVES

BRONZE / BRASS / CAST IRON VALVES



DIAPHRAGM VALVES



PLASTIC VALVES



KNIFE GATE VALVES



FITTINGS

SMALL FITTINGS



TYPE

**ELBOW – TEE – CROSS – COUPLING BUSHING - PLUG - CAP –
NIPPLES – UNION
SOCKOLET – THREADOLET - WELDOLET**

CONSTRUCTION

**B 16.11 - B 31.1 – B 31.3
BS 3799 - MSS SP-83 – MSS SP-95 - NACE MR 01.75**

SIZE

1/8" TO 4"

RATING

**3000 – 6000 – 9000
STD – XS – 160 - XXS**

MATERIALS

**A 105 – A 106 – LF2 – LF3
F 1 – F 5 – F 9 – F 11 – F 22
F 304 – F 316 – F 321
DUPLEX – SUPER DUPLEX
MONEL – INCONEL - INCOLOY**

BIG FITTINGS



TYPE

**ELBOW (S.R. AND L.R.)
180 DEG, 90 DEG, 45 DEG, 3D, 5D, 7D HOT AND COLD BENDING
TEE – REDUCER – CROSS – CAP**

CONSTRUCTION

**B 16.25 B 16.9 – B 31.1 – B 31.3 – B 31.4 – B 31.8
NACE MR-01-75 - MSS-SP43 - MSS-SP75**

SIZE

1/2" TO 84"

RATING

**STD - XS – XXS
SCHEDULE 10 TO 160
SPECIAL THICKNESS ON REQUEST**

MATERIALS

**A 234 WPB – A 420 WPL3 – A 420 WPL6
MSS SP-75 WPHY 42-46-52-56-60-65-70-80
A 234 WP1-5-9-11-12-22-91-92
A 403 WP304-316-317-321-347
DUPLEX - SUPERDUPLEX**

FLANGES

FLANGES



TYPE

WN – THREADED – SW – BLIND
SLIP ON – LAP JOINT – LONG WN
STUB END – ORIFICE FLANGE
SPECTACLE FLANGE
RING SPACER – SPADE
ANCHOR FLANGE

CONSTRUCTION

ANSI – ASME – API - UNI
MSS SP-44 – BS 3293

SIZE

1/2" TO 60"

RATING

ANSI 150 TO 2500
API 3000 TO 10000
UNI PN 6 TO PN 250
MSS SP-44 150 TO 900
BS 3293 150 TO 600

MATERIALS

A 105 – A 106 – LF2 – LF3
F 1 – F 5 – F 9 – F 11 – F 22
F 52 – F 60
F 304 – F 316 – F 321
DUPLEX – SUPER DUPLEX
MONEL – INCONEL - INCOLOY

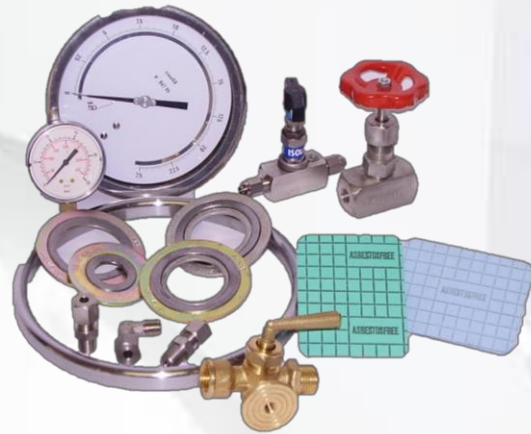
OTHER PIPING COMPONENTS

**GASKETS:
FLAT – SPW – RING JOINT**

GAUGES

**INSTRUMENTS VALVES AND
COMPRESSION FITTINGS**

**DIFFERENT TYPES, SIZE,
RANGES AND MATERIALS**



BOLTING:

**ALL TYPES OF BOLTS –
STUDS AND NUTS FOR PIPING
OF DIFFERENT SIZES AND
MATERIALS**



INSULATING JOINTS:

**ALL JOINTS FOR PIPING OF
DIFFERENT SIZES CLASS AND
MATERIALS**



STRAINER,

**FILTER (T TYPE - Y TYPE &
TEMPORARY TYPE),**

**STEAM TRAPS
(THERMODYNAMIC,
THERMOSTATIC, INVERTED
BUCKET, BALL FLOAT).**

SIGHT GLASS



VARIOUS EQUIPMENT

- **ELECTRIC PUMPS**
 - **MOTORIZED PUMPS**
 - **FURNACES**
 - **GENERATORS**
 - **COMPRESSORS**
 - **ELECTRIC MOTORS**
 - **CRANES**
 - **FORKLIFT TRUCKS**
 - **TOOLS**
 - **EQUIPMENT FOR LABORATORIES**
-